

The African crested rat's poisonous hairs studied by attenuated total reflection infrared spectroscopy

Maxime Boulet-Audet and Chris Holland

Department of Zoology, University of Oxford, South Parks Road, Oxford OX1 3PS, UK

Introduction

Plant toxins are commonly used by many invertebrates, as well as a few vertebrates, as an effective defence against predation. However, such behaviour has recently been observed in a mammal.¹ The African crested rat, *Lophiomys imhausi*, applies a potent toxin to the fur alongside its flanks. It acquires this toxin from *Acokanthera schimperi*,¹ a shrub abundant in East Africa and dubbed the "poison arrow tree" due to its use by local hunters. The poison itself, a cardenolide called ouabain,² appears not to affect the rat but causes pain and cardiac dysrhythmia to most vertebrates and even a small amount can kill an elephant. However, in the hands of a skilled medic, this cardiac glycoside is a well known treatment for congestive heart failure.³

To obtain this poison, the African crested rat has been observed gnawing and chewing the bark of the *Acokanthera* to release ouabain, which is water soluble due to its hydroxyl groups.¹ At the same time, the rat secretes proteins in its saliva that can bind plant polyphenols and precipitate them.⁴ Once the plant material has been thoroughly chewed, the coarse colloid mixture is applied by the rat onto its two lateral fur lines, extending from behind the ears across its flank.¹ These fur strips consist of highly specialised hairs, normally hidden beneath longer hairs to prevent exposure to rain and sun, which allows the spittle to be rapidly wicked-up and stored.¹

When threatened, *Lophiomys* uses its specialised dermal muscles to erect the hairs covering the poisonous lines, forming an easily identifiable dorsal crest.¹ The rat then directs the attention of the predator toward this lateral fur line in a taunting display. Any predator that bites this area exposes itself to the poison, as evidenced by numerous anecdotes of dogs dying from tackling this rat. As part of the defence mechanism of the rodent, we investigated its highly specialised hairs using infrared spectroscopy as well as gravimetry.

Methods

Lophiomys imhausi lateral hairs were taken from a skin belonging to the National Museums of Kenya (Catalogue number NMK 180396 Coll Sept. 2010 Field No D. 1). The saliva extract from the samples was prepared by washing several hairs with demineralised water and filtered using 0.2 µm pore size membrane under vacuum. The spectra acquisition was performed using a Nicolet 6700 Fourier transform infrared (FT-IR) spectrometer (Thermo Scientific, Madison, WI, USA) equipped with a liquid–nitrogen-cooled mercury–cadmium–telluride MCT-A detector together with a single bounce diamond attenuated total reflection (ATR) accessory (Golden Gate, Specac, UK). This sampling method allowed the selective probing of the first few microns of the hair's surface. Spectra were obtained from an average of 64 scans

at 4 cm⁻¹ resolution. All spectral operations were performed using Omnic 7.3 (Thermo Scientific, Madison, WI, USA). A simple ATR correction was applied to compensate for the penetration depth dependency on the wavelength. The spectra were offset with the 1900–1850 cm⁻¹ region before normalisation with the integral of the 1700–1300 cm⁻¹ region. The spectra were recorded from different parts of a rat hair before washing with demineralised water for comparison. The wicking properties of the hair were measured with a Q500 thermal gravimetric analyser (TA Instruments) by immersing the first 1 mm of the tip of the hair in demineralised water. The mass of the suspended hair was recorded as a function of time whilst the water was absorbed by capillarity up the hair.

Results and discussion

As shown in Figure 1, the specialised hairs are hollow, similar to those of some arctic mammals to aid with insulation but, for the rat, they are also perforated, thus suggesting a totally different function. These hairs consist of a mesh cylinder of 200–250 µm in diameter, encapsulating many fine strands of around 10 µm. We propose that this open lattice enables capillary uptake and ensures a high storage capacity for the poison payload as well as any future contact resulting in rapid release, especially if pressed flat (i.e. chewed).

As illustrated in Figure 1, a straightforward way of monitoring the capillarity

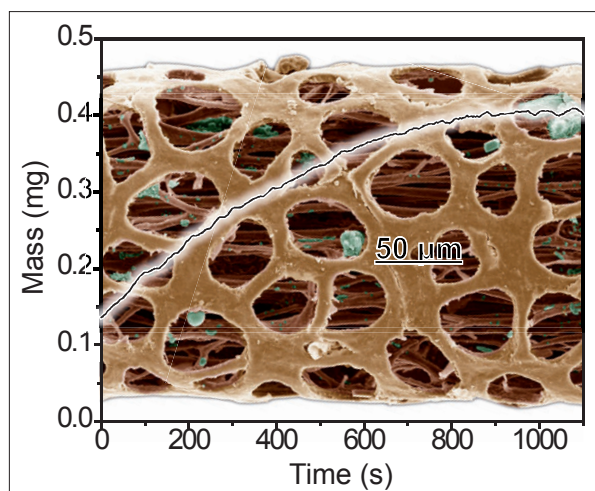


Figure 1. Mass as a function of time for a washed *Lophiomyia* hair in contact with water.

effect is to record the increase in mass of the hair whilst its tip is immersed in water. We found that soon after immersion, the mass increased linearly with time at a rate of water uptake of 0.5 nL s^{-1} ($\sim 30 \mu\text{m s}^{-1}$) before saturating after 15 minutes. The ability for water to spread throughout suggests a highly effective means of uptake, regardless of where the rat applies its saliva. Furthermore, the mass of the filled hair reached a plateau at 0.42 mg, more than three times its dry weight. By assuming a hair density of 1.30 for keratin,⁵ the porosity of the structure can be estimated to 68%. To locate the presence of the toxin, the local chemical composition, every 2 mm along a rat hair, was probed by infrared spectroscopy using ATR.

Figure 2 illustrates that every spectrum shows protein amide I, II and III absorption bands due to α -keratin (at 1635 cm^{-1} , 1531 cm^{-1} and 1320 cm^{-1} , respectively). The amide I band shape and frequency for the maximum absorption is typical of a secondary structure dominated by α -helix structures, which is generally observed for hair.⁶ One note though, is the slightly lower frequency of the amide I band compared to the literature due to the anomalous dispersion of the refractive index when using a diamond internal reflection element.⁷

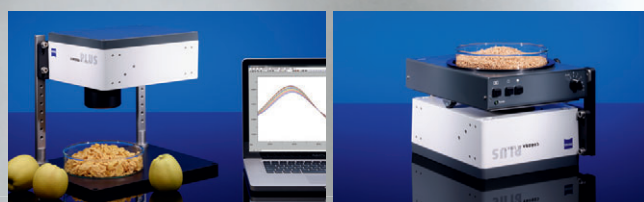
In addition, we found the infrared spectra obtained are highly dependent on the section probed. The main differences are the bands at 1018 cm^{-1} assigned to C–O stretching, the 1395 cm^{-1} peak assigned to ester groups and 1600 cm^{-1} associated with the OH bending. These components must come from the polyphenol compounds and the ouabain toxin as they have numerous hydroxyl functions. Since the bark and roots of *Acokanthera* contain vast amounts of these active ingredients, their presence in the rat's hairs corroborates the visual observation of the animal applying the chewed bark mixture onto its fur. We observed that the spectral bands are particularly strong in the middle section of the hair, but become much weaker at the tip

www.spectroscopyeurope.com



To make sure you don't have any unpleasant surprises!

Quality Analysis for Quality Food with Diode Array Spectrometers



Laboratory analysis with CORONA PLUS and TURNSTEP

- High sample throughput due to fast measurements in only 15 seconds
- High reproducibility of measurement results even for non-homogeneous sample material
- Sample preparation doesn't get any easier
- Easy to operate software designed especially for production



Process optimization with CORONA PLUS and MCS 600/ARMOR

- Real-time measurement – Fast spectra recording and immediate determination of the quality parameters
- Process-capable – Simple integration in local control systems for automatic process control and optimization
- Innovative – Compact, rugged design
- Numerous installation options available

FASTLINK / ENTER 006 FOR FURTHER INFORMATION

Carl Zeiss MicroImaging GmbH
07740 Jena, Germany

Industrial | Jena Location
Phone : + 49 3641 64 2838
Telefax : + 49 3641 64 2485
E-Mail : info.spektralsensorik@zeiss.de

www.zeiss.de/spectral



We make it visible.

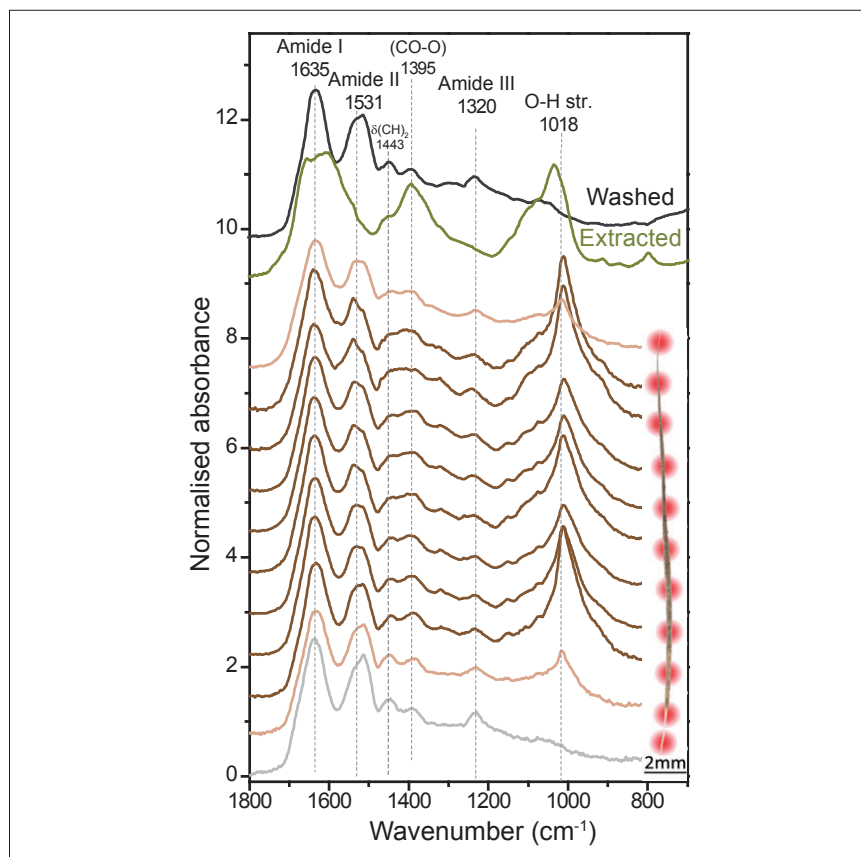


Figure 2. Infrared spectra of the washed and unwashed *Lophiomy* hair at different positions.

and root. Underneath the epidermis of the animal, the root of the hair presents no traces of these compounds and only bands characteristic of keratin proteins which is not surprising, given the unique porous structure is also absent.

When washed with water, the C–O band at 1018 cm^{-1} disappeared, including in the middle section (black-coloured spectrum), confirming the solubility of the compounds within. Detecting the polyphenol and ouabain by ATR/FT-IR spectroscopy proves that they are also present on the hair's surface. By pressing a loaded hair against the ATR crystal and removing it, we observed a trace on the surface detectable by IR spectroscopy (olive-coloured spectrum). This demonstrates the ability of these porous hairs to unload their content upon pressure or contact with water, confirming our hypothesis for the mechanisms of release. As a result, both the force of the bite and the saliva of the predator release toxin from these hairs.

Conclusions

We examined the form and function of specialised hairs from the African crested rat, *Lophiomy imhausi*, using a combination of gravimetry and FT-IR spectroscopy. The study of the capillarity effect by gravimetry demonstrated the ability of the hair to absorb liquid from the tip to the root within minutes. Our measurements not only corroborated our visual observation of the phenomenon, but allowed the estimation of the structure's porosity. To detect the presence of the ouabain toxin mixture in these pores, infrared spectroscopy was employed. Using spectral markers associated with polyphenols, this technique revealed the presence of *Acokanthera* toxic mixture in the hair with location dependant concentration. In addition, taking advantage of ATR, the spittle's capability to be released upon contact was demonstrated.

We also confirmed that this toxic mixture can be dissolved in water. As the poison must be present in the mouth of

the *Lophiomy* during chewing, the origin of the rodent's immunity might be due to a mutation in the ouabain binding site affecting its saliva or digestive tract,⁸ but this remains unknown. The understanding of this tolerance to the cardenolide could lead to the development of a new treatment for human cardiac conditions, exploiting the metabolic pathway of the drug. Hence, this rat has demonstrated that the only limits to what we can learn from nature are the strengths of our analytical tools and techniques.

References

1. J. Kingdon, B. Agwanda, M. Kinnaird, T. O'Brien, C. Holland, T. Gheysens and F. Vollrath, "A poisonous surprise under the coat of the African crested rat", *Proceedings of the Royal Society B-Biological Sciences* (2011). doi: 10.1098/rspb.2011.1169
2. M. Arnaud, *Comptes rendus de l'Académie des Sciences* **107**, 1011 (1888).
3. W.A. Jacobs and N.M. Bigelow, "Ouabain or *g*-strophanthin", *J. Biol. Chem.* **96**, 647–658 (1932).
4. J. Muenzer, C. Bildstein, M. Gleason and DM. Carlson, "Properties of proline-rich proteins from parotid glands of isoproterenol-treated rats", *J. Biol. Chem.* **254**, 5629–5634 (1979).
5. P. Mason, "Density and structure of alpha-keratin", *Nature* **197**, 179–180 (1963). doi: 10.1038/197179a0
6. E.G. Bendit, "Infrared absorption spectrum of keratin. I. Spectra of α -, β - and supercontracted keratin", *Biopolymers* **4**, 539–559 (1966). doi: 10.1002/bip.1966.360040506
7. M. Boulet-Audet, T. Buffeteau, S. Boudreault, N. Daugey and M. Pézolet, "Quantitative determination of band distortions in diamond attenuated total reflectance infrared spectra", *J. Phys. Chem. B* **114**, 8255–8261 (2010). doi: 10.1021/jp101763y
8. E. Labeyrie and S. Dobler. "Molecular adaptation of *Chrysochus* leaf beetles to toxic compounds in their food plants", *Mol. Biol. Evol.* **21**, 218–221 (2004). doi: 10.1093/molbev/msg240

Top class

Food and beverage industries as well as pharmaceutical, chemical and manufacturing industries need reliable quality control in their production chains for maximum consumer safety. The more they know about compounds and compositions, the safer the ground they are on in an environment of highly demanding standards, regulations and directions.

As one of the drivers in analytical instrumentation, Shimadzu delivers leading-edge systems. They are based on constant commitment to innovation and high-quality technologies as well as close cooperation with academics, manufacturing clients and the markets worldwide.

Numerous world premieres and awards substantiate Shimadzu's claim to offer top-class instruments and solutions while heading developments and enabling new applications even more sensitive than before.

Shimadzu R&D designs tomorrow's solutions – today.

Past



AA-646



GC-8A



GCMS-QP1000



UV-260

Present



GCMS-QP2010 Ultra



Nexera



LCMS-8030

Whether in chromatography, spectroscopy, sum parameter, mass spectrometry, weighing technologies, material testing or life science – Shimadzu continuously exceeds the boundaries of technology, opening new windows on the molecular world.

www.shimadzu.eu



 **SHIMADZU**

FASTLINK / ENTER 007 FOR FURTHER INFORMATION